

An extensive projector series for your unique presentation needs – now within your reach



This versatile projector series harnesses Epson's latest 3LCD technology to deliver impeccable, high-quality images for powerful school and office presentations. With a varied selection of projector models to choose from, you are sure to find one that will suit your needs and offer great value for your money.

- **Enjoy versatility of use**
With the first-ever sliding Horizontal Keystone Adjuster and the automatic vertical keystone detection and adjustment, presentation set-up is made fast and easy, even for beginners
- **Accomplish more with less**
With the built-in HDMI terminal, projecting high-quality images and sounds, and creating impactful PC-less slideshows are made possible
- **Experience added convenience**
With the 3-in-1 USB display, you gain easy access to control, image and sound transmission without the messy cabling



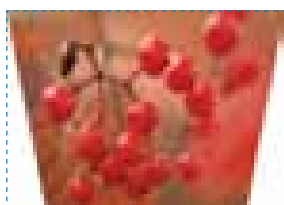
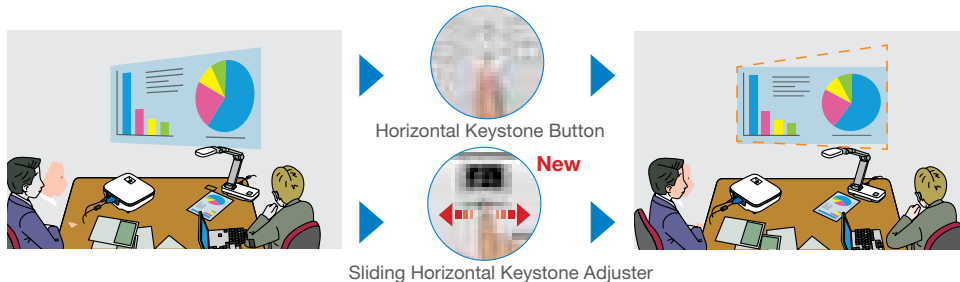
This versatile projector series harnesses Epson's latest 3LCD technology to deliver impeccable, high-quality images for powerful school and office presentations. With a varied selection of projector models to choose from, you are sure to find one that will suit your needs and offer great value for your money.



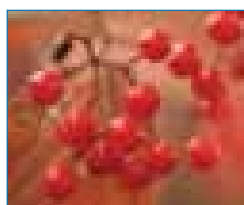
EB-S02/S11/S12

ENJOY VERSATILITY OF USE

Deliver powerful presentations anywhere in the room. With the easy-to-use sliding Horizontal Keystone Adjuster*, screen corrections can be done quickly, easily and accurately, for both beginners and experienced users.



Automatic



With automatic vertical keystone detection and adjustment**, there is no longer any need for awkward and time-consuming manual image adjustments that interrupt the smooth flow of your presentation delivery. This handy feature automatically detects the projector's vertical keystone distortion and corrects it instantly.

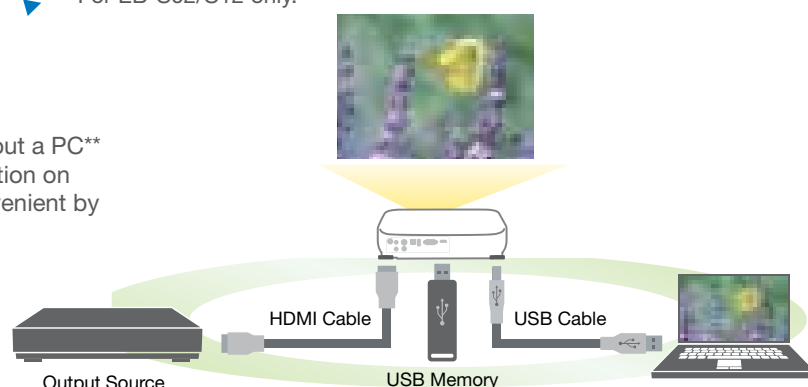
* For EB-S12 only. (S11 with Horizontal Keystone Button)

** For EB-S02/S12 only.

ACCOMPLISH MORE WITH LESS

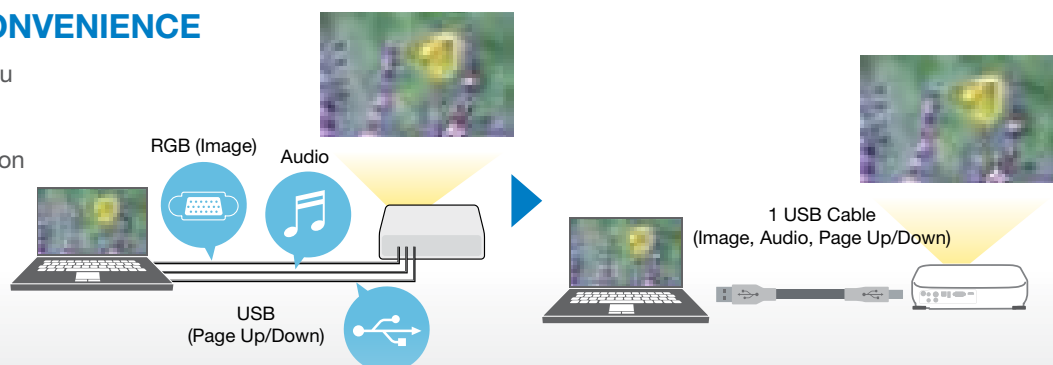
You can even view a jpeg, bmp, png or gif slideshow without a PC** by simply inserting a USB memory device into the connection on the projector. Operation of the projector is also made convenient by using either the remote control or the operation panel.

**For EB-S11/S12 only.



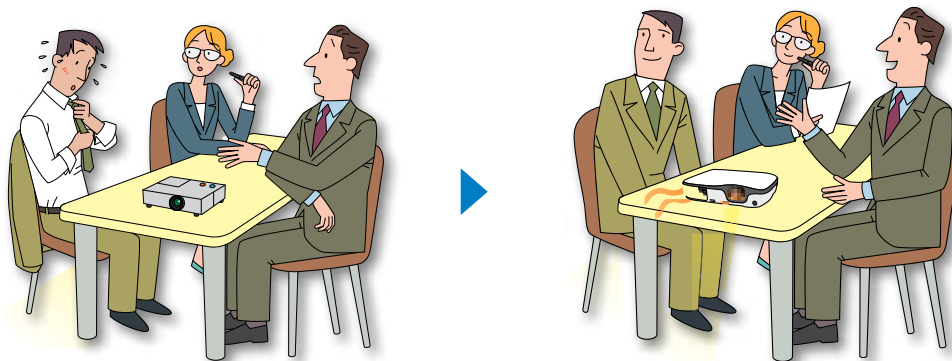
EXPERIENCE ADDED CONVENIENCE

Designed to better assist the way you teach or present, this series features a 3-in-1 USB display. This allows control, image and sound transmission from a computer to the projector via a USB cable, eliminating the need for complicated cabling. A built-in speaker also allows you to enjoy powerful sound without the need of connecting a separate speaker.



CLEVERLY POSITIONED EXHAUST ELIMINATES DISTRACTION

The exhaust is intelligently positioned in the front, preventing anyone from being exposed to the hot exhaust, especially when on a narrow table. This enables the audience seated at the side or back of the projector to fully concentrate on the presentation.



CONNECT DIRECTLY TO A DOCUMENT CAMERA

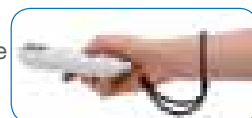
This projector series conveniently connects directly to Epson's Portable Document Camera ELPDC06 via a USB cable without a computer, revolutionising the way you present. Simply place the presentation material under the camera and enlarge the projection according to the desired size – perfect for classroom and office discussions.

*For EB-S11/S12 only.



REMOTE CONTROL

You can attach a strap to the remote control to prevent misplacement. (Strap not included.)



LONG-LASTING LAMP LIFE OF UP TO 5,000 HOURS

Enjoy greater cost savings and ease of maintenance with Epson's proprietary long-lasting E-TORL lamp. Designed to optimise light output, the highly efficient Epson E-TORL lamp delivers noticeably brighter images with greater power efficiency.

E-TORL Lamp

Conventional Lamp

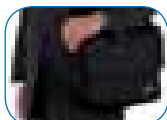


Brightness of E-TORL lamp compared to a conventional lamp of same power.



SMALL AND STYLISH – YOUR PERFECT PRESENTATION COMPANION

An expression of beauty for your tabletop, the small and sleek design of the projector provides an added elegance to your presentations. Lightweight and compact, this projector is the ideal portable solution to all your presentations on the move.

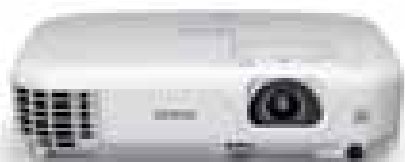


Eco Features

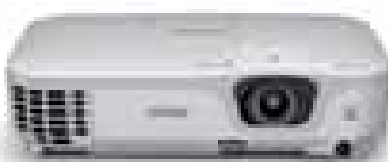
- Equipped with an E-TORL lamp engineered to maximise light usage and power efficiency
- Uses just 0.47 W of power in standby mode
- Projector optics employ lead-free lenses
- Unpainted plastic housing reduces the environment impact
- The flame retardants used in the plastic housing do not contain chlorine or bromine

Better Products for a Better Future™

For more information on Epson's environmental programmes, visit www.epson.com/environment



EB-S02



EB-S11



EB-S12

PARTNERS IN PERFECTION

Ultra Portable Document Camera ELPDC06



Easily portable; 0.96 kg/2.11 lbs
1.92 megapixels with 15 fps
4x digital zoom
USB powered

Desktop Document Camera ELPDC11



2.2 kg/4.85 lbs
5 megapixels with 30 fps
10x digital zoom
Bundled with microscope adaptor

Interactive Unit ELPIU01



USB powered
Easy interactive function
Simple and easy set-up

Colour Light Output

- an easy way to evaluate projector colour output

What is Colour Light Output?

Colour Light Output (CLO) is a specification that provides critical information on a projector's ability to deliver colour. Developed by colour scientists using the same approach as White Light Output (Brightness) measurement, Colour Light Output provides the buyer with additional key information about colour.

Does Brightness measure colour?

No. Current product specifications such as Brightness (or White Light Output), Contrast Ratio and Resolution give no information regarding a projector's ability to reproduce colour. The existing Brightness specification only measures the total amount of White Light projected. It does not measure colour – in fact, many manufacturers artificially boost brightness by adding white light, which dilutes the projector's colour brightness.

Why is Colour Light Output important?

Colour Light Output is critically important because it measures the brightness of Red, Green and Blue. Red, Green and Blue create white when combined in the right proportions. They also comprise the input signal that tells your projector how to reproduce colour images. Beautifully balanced colour is possible when bright Red, Green and Blue combine to produce the brightness equal to White. Colour Light Output provides users with an additional way to evaluate a projector and make more discerning buying decisions.

Is Colour Light Output the same in all projectors?

No. There are vast differences in the Colour Light Output of projectors on the market today. Look at the images below from two competing projectors

3LCD Projector

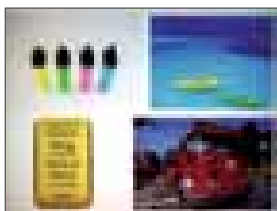


Image #1*

Brand X

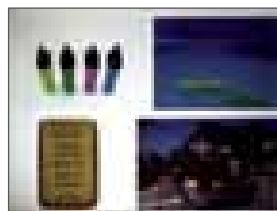


Image #1*

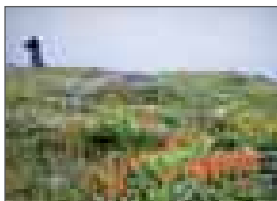


Image #2*

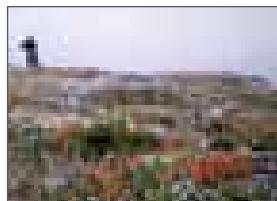


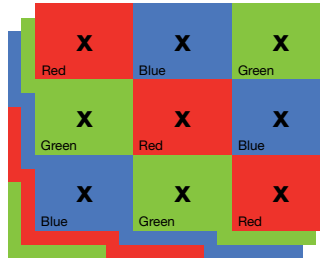
Image #2*

Colour Light Output specification describes the difference in colour between these two projectors.

How is Colour Light Output measured?

X	X	X
X	X	X
X	X	X

Brightness (or White Light Output) measures the total amount of white light projected in lumens on a nine point grid. It does not measure colour.



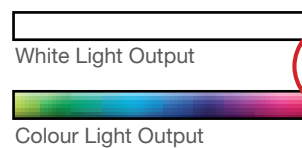
Colour Light Output uses 3 sets of a nine-point grid to measure the primary colours - red, green and blue, using the same approach used to measure White Light Output in lumens.

How should Colour Light Output be used?

Colour Light Output should be used with White Light Output to provide insight into a projector's overall picture quality. Two things to remember:

1. Select High Colour Light Output.
2. Make sure the Colour Light Output equals the White Light Output.

3LCD Projector
High CLO



2200 Lumens
=
2200 Lumens

Brand X
Low CLO



2200 Lumens
≠
800 Lumens

When selecting a projector, ask for the Colour Light Output measurement.

*Actual photographs of images produced by 2 competing projectors run in default mode. Price, Resolution and Brightness (White Light Output) are the same for both projectors.

Epson Revolutionises Projector Market with 3LCD Technology and Leads as World's No.1* Projector Brand for 10 Consecutive Years!

* Based on independent research by Futuresource Consulting

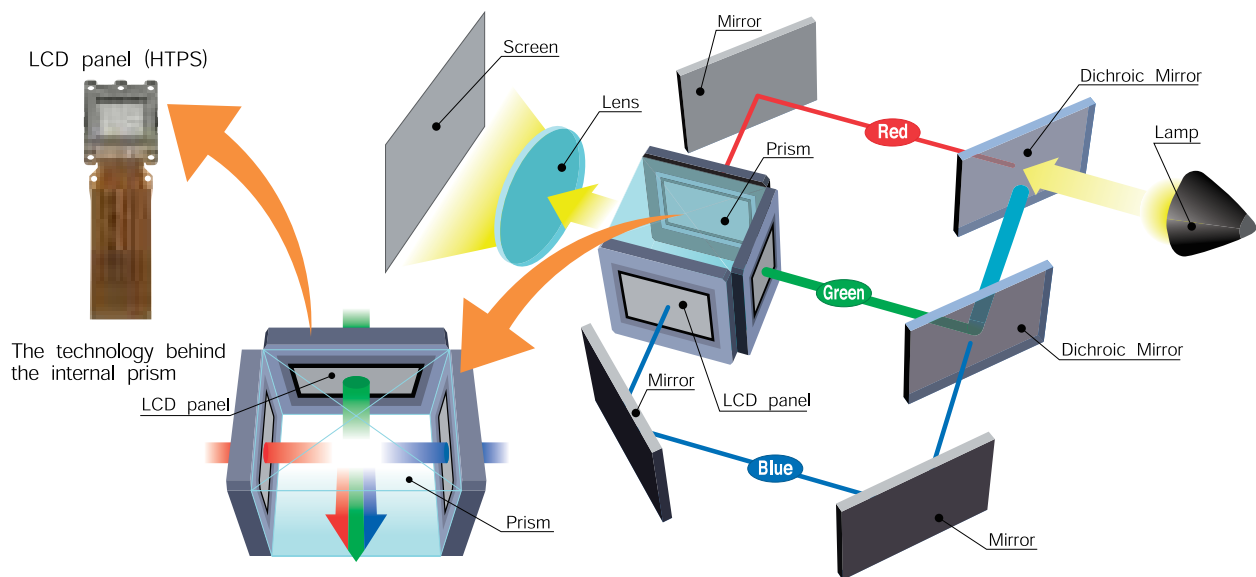
Advantages of 3LCD Projection System

Bright Images and Faithful Colour Reproduction

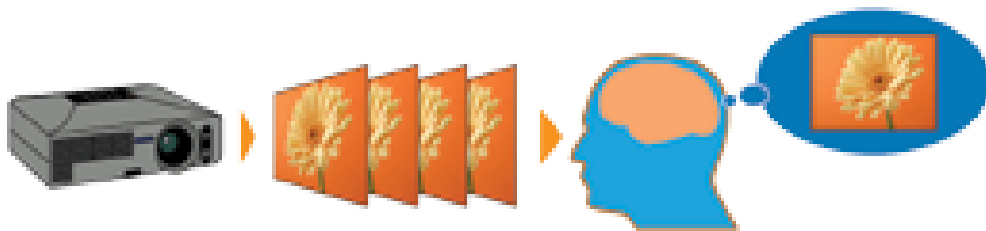
3LCD projectors offer all-time colour (Red, Green and Blue) projection thereby ensuring faithful full colour reproduction. This is suitable for projection of colour intensive images such as videos, photographs and colour charts.

Incredible Details

3LCD projectors are able to produce an unparalleled range of grayscale images, which contributes to delivering incredible colour images that are smooth and seamless.



3LCD projector : RGB are projected at the same time, which makes the single composite image easy on the eyes.



** HTPS (High Temperature Poly-Silicon) is an active matrix transmissive LCD. It is extremely small and produces high-quality images.

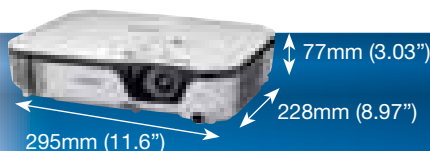
Gentle on the Eyes

3LCD projectors' images do not suffer from colour break-up (commonly known as the rainbow effect). The projections are easy on the eyes as you will not be affected by any distorted pattern.

3LCD projectors use 3 separate LCD panels to form a continuous image containing all colours (red, blue and green) ensuring smooth video playback, even for rapid-motion images.

Reliable Technology

With more than 60 million 3LCD chips shipped to date, the powerful and road-tested 3LCD projection technology is extremely reliable, and is trusted by many throughout to deliver sharp and true-to-life images.



EB-S02/S11/S12

SPECIFICATIONS

SUPPLIED ACCESSORIES

Power Cord	1.8m
Computer Cable	1.8m
USB Cable	1.8m, USB-A / USB-B (EB-S12)
Remote Control	With batteries x 2
User Manual Set	
Soft Carrying Case	EB-S11, EB-S12

OPTIONAL ACCESSORIES

Spare Lamp	ELPLP67
Soft Carrying Bag	ELPKS63
Air Filter Set	ELPAF32

PERIPHERALS

Portable USB Document Camera	ELPDC06
Desktop Document Camera	ELPDC11
Interactive Unit	ELPIU01

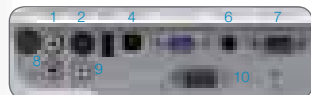
CONNECTOR PANEL

- 1 Audio-L Input
- 2 S-Video Input
- 3 USB (Type A)
- 4 USB (Type B)
- 5 Computer Input
- 6 Audio Out
- 7 Monitor Out
- 8 Audio-R Input
- 9 Video Input
- 10 RS-232C

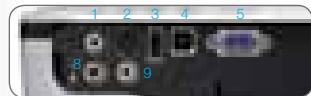
EB-S02



EB-S11



EB-S12



MODEL NUMBER		EB-S02	EB-S11	EB-S12
PROJECTION SYSTEM		RGB liquid crystal shutter projection system		
PROJECTION METHOD		Front / Rear / Ceiling mount		
SPECIFICATION OF MAIN PARTS				
LCD				
SIZE	0.55-inch without MLA (D7)			
DRIVING METHOD	Poly-silicon TFT active matrix			
PIXEL NUMBER	480,000 dots (800 x 600) x 3			
NATIVE RESOLUTION	SVGA			
NATIVE ASPECT RATIO	4:3			
PROJECTION LENS				
TYPE	Manual focus and digital zoom			
F-NUMBER	1.44			
FOCAL LENGTH	16.7 mm			
ZOOM RATIO	1.0 - 1.35 (Digital Zoom)			
LAMP				
TYPE	200 W UHE (E-TORL)			
LIFE (NORMAL/ECO)	4,000 hours / 5,000 hours			
BRIGHTNESS*				
WHITE LIGHT (NORMAL/ECO)	2,600 lm / 2,080 lm		2,800 lm / 2,240 lm	
COLOUR LIGHT (NORMAL/ECO)	2,600 lm / 2,080 lm		2,800 lm / 2,240 lm	
CONTRAST RATIO**		3,000:1		
SCREEN SIZE (PROJECTED DISTANCE)		23" - 350" [0.88 - 10.44 m]		
		60" screen [1.77 - 2.40 m]		
THROW RATIO		1.45 - 1.96 (Wide - Tele)		
OFFSET		8:1		
SOUND OUTPUT		1W Monaural	2W Monaural	
KEYSTONE CORRECTION				
VERTICAL / HORIZONTAL ANGLE	±30° / -		±30° / ±30°	
AUTOMATIC	Vertical	N/A	Vertical	
CONNECTIVITY				
ANALOG INPUT	D-SUB 15PIN (BLUE)	D-Sub 15pin (Blue) x 1		
	COMPOSITE	Composite Video: RCA (Yellow) x 1		
	COMPONENT	Component Video: D-sub 15pin (Blue) (common with Analog RGB connector)		
	S-VIDEO	S-Video: Mini DIN x 1		
SIGNAL OUTPUT	D-SUB 15PIN (BLACK)	N/A	D-sub 15pin (Black) x 1	N/A
AUDIO INPUT	RCA	RCA (White/Red) x 1		
AUDIO OUTPUT	STEREO MINI-JACK	N/A	Stereo Mini-Jack x 1	N/A
DIGITAL	HDMI	N/A		
CONTROL	RS232C	N/A	RS-232C	N/A
OTHERS	USB TYPE A	N/A	USB TYPE A x 1	
	USB TYPE B	USB TYPE B x 1		
FUNCTIONS				
USB DISPLAY	Yes (3-in-1)			
USB SLIDESHOW	N/A		Yes	
OPERATING TEMPERATURE		5°C to 35°C <41°F to 95°F> (20% - 80% Humidity)		
OPERATING ALTITUDE***		0 to 2,286 m <0 ft to 7,500 ft>		
START-UP PERIOD		About 5 seconds		
DIRECT POWER ON/OFF		Yes / Yes		
COOL-DOWN PERIOD		Instant off		
POWER SUPPLY VOLTAGE		100 - 240 V AC ±10%, 50/60 Hz		
POWER CONSUMPTION				
220-240V	LAMP ON	270W		
	STANDBY (NETWORK OFF)	0.47W		
DIMENSIONS EXCLUDING FEET (D X W X H)		228 x 295 x 77 mm (8.97" x 11.6" x 3.03")		
WEIGHT		Approx. 5.1 lbs / 2.3 kg		
FAN NOISE (NORMAL/ECO)		37 dB / 29 dB		

* Colour mode: Dynamic, Zoom: Wide

** Colour mode: Dynamic, Brightness control: Normal, Zoom: Wide

*** Above 1,500m/4,921ft: with High altitude mode

EPSON and EXCEED YOUR VISION are registered trademarks of Seiko Epson Corporation.

All other product names and other company names used herein are for identification purposes only and are the trademarks or registered trademarks of their respective owners.

EPSON disclaims any and all rights in those marks. Projected images shown herein are simulations. The actual product design and contents may vary. Specifications are subject to change without notice.

EPSON INDIA PVT. LTD.

12th Floor, The Millenia, Tower A, No.1,
 Murphy Road, Ulsoor, Bangalore - 560 008.
 Tel: 080-30515000 Fax: 080-30515005

Regional Offices:

Ahmedabad - 26407176/77, Chennai - 30277500/11, Cochin - 4012315,
 Coimbatore - 4393379, Indore - 4701830, Kolkata - 22831589/90, Mumbai -
 28261515-17, New Delhi - 46585444, Pune - 30286000, Secunderabad - 40359898



Epson Helpline:

For product info, service or to order a cartridge - 1800 425 0011
 For service - 1860 3000 1600 (9AM - 6PM) (Mon - Sat)

Dealer's Stamp



Official Partner
 of Manchester United